

Mount Kilimanjaro



KILIMANJARO CHARITY TREK - OCT 2011



Dominating the landscape like no other mountain, Kilimanjaro is the highest volcano in the world and the highest free-standing mountain in the world at 5895 metres, or 19,340 feet. It is one of the fabled Seven Summits, the highest peak in Africa and a great challenge for the adventure traveller. Kilimanjaro is a perennial favourite, not to be underestimated but the attraction is even greater because with time and adequate preparation, it is possible to walk all the way to the summit without technical mountaineering equipment or experience. .



The total trek distance is 120 kilometres, over 6 days with a net height gain of 4405 metres and passing through five distinctly different habitats – cultivated farmland, montane forest, alpine heath, semidesert and ice-cap. The temperature will generally be warm during the day dropping to an average minimum of 5 degrees. Summit morning however can be as low as minus 10 or 12 degrees. Rainy seasons are traditionally in April and October, but Kilimanjaro can be climbed any time of the year.

Raise Money in Support of Kent Search and Rescue

you will need to raise £2750 for Kent Search and Rescue — the cost of the trip will be deducted from this and the remainder donated to the chosen charities



After the trek we will return to the Hotel for a well deserved shower and celebration drink. Next morning we will get back in the overland truck for an overnight camping safari in Amboseli on our return to Nairobi to catch our flight home



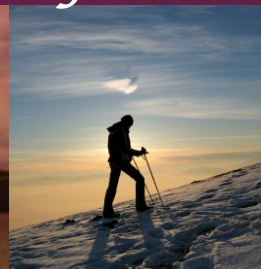
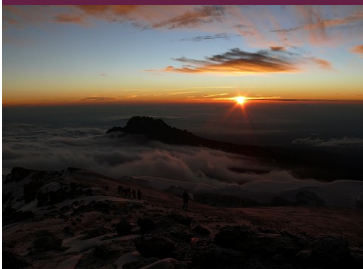
The Trek

The secret of climbing Mt Kilimanjaro is to go slowly and enjoy the scenery, drink well, eat well and sleep well. A regular, maintained pace will ensure proper acclimatisation. We take seven days to climb the mountain. Summit day starts early on Day Six

We will start with a flight to Nairobi and then a transfer to Tanzania via a fully converted overland truck with aircraft style seating and plenty of storage, the overland adventure will eventually deliver us to our hotel just outside Moshi at the foot of the mountain



Climbing the highest peak in Africa



Contact Paul Lewis MBE - 07977 066165 - paul.phlconsultancy@gmail.com

This is a fully supported six-day camping trip through a remote wilderness area, with great access to the remaining glaciers and the western breach. You'll enjoy inspirational views of Kibo Peak, the eternal icefields, and Kili's scree-covered dome... before the ultimate achievement of summit morning!

